

BRINGING GREEN POWER TO LIFE



# G-HOME 3/5/8/10 KW SOLAR KIT

ALL-IN-ONE · ENERGY STORAGE · EMS  
ON-GRID SYSTEM · HYBRID SYSTEM



GCL SYSTEM INTEGRATION TECHNOLOGY CO.,LTD  
NO.28 XINGQING ROADSIP SUZHOU, JIANGSU, CHINA  
TEL:+86 512 6983 2831  
EMAIL:solarsystem@gclsi.com

10 YEARS SOLAR PANEL PRODUCT WARRANTY

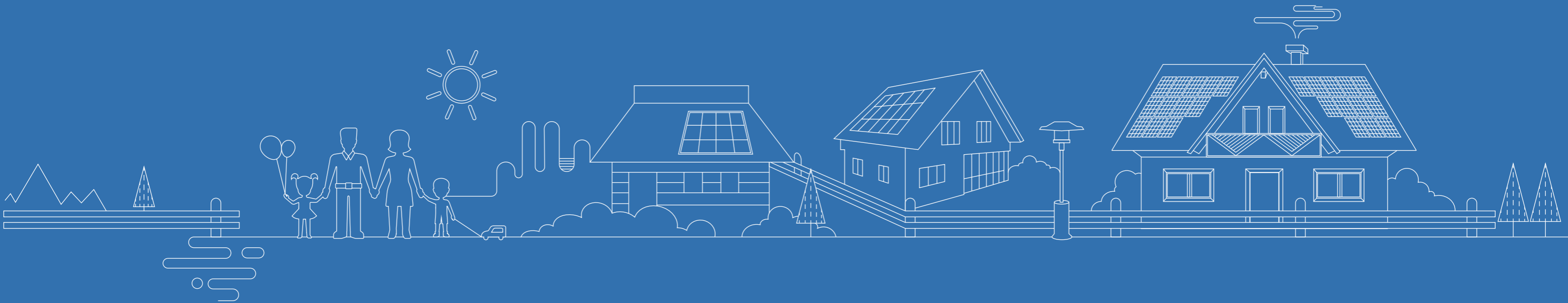
25 YEARS SOLAR PANEL PERFORMANCE WARRANTY

@ en.gclsi.com

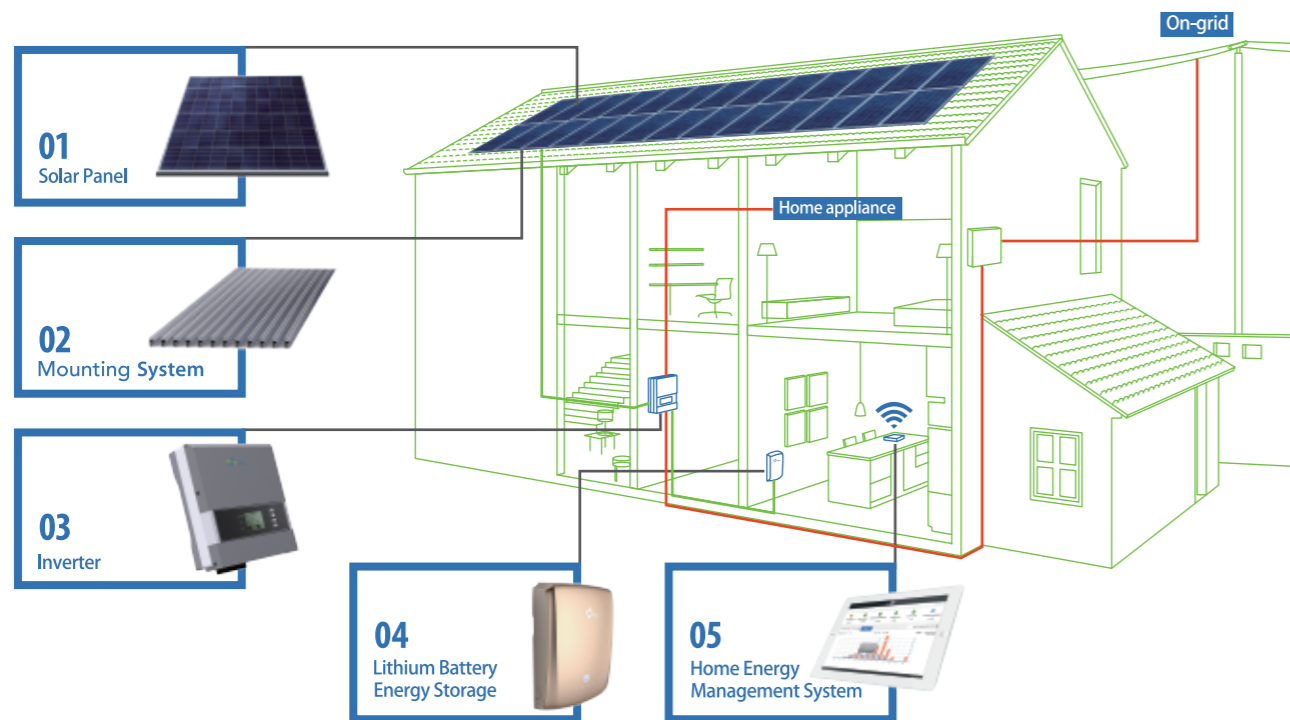


# BRINGING SMART POWER TO LIFE

---



# INTEGRATED DESIGN AND SMART MANAGEMENT



Solar Panel	Mounting System	Inverter	Lithium Battery Energy Storage	Home Energy Management System
Good performance and reliability on rooftop	Quick installation, based on minimal design	High efficient, bi-directional PV and battery energy converter, better compatibility	Intelligent and reliable home energy storage system	Real time performance monitoring and data analysis



**RIGOROUS QUALITY CONTROL**  
Solar panels meet the highest standard ISO9001:2008, ISO 14001:2004 and OHSAS:18001:2007



**LONG-TERM RELIABILITY TESTS**  
Solar panels have passed the tests for harsh environment, ammonia corrosion and sand blowing tests: IEC61701, IEC62716, DIN EN 60068-2-68)



**BETTER COST PERFORMANCE**  
G-home solar kit helps you to reduce the electricity bill.

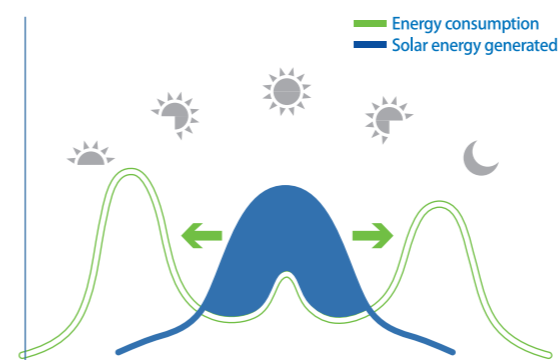
## MAXIMIZE SOLAR ENERGY SELF-CONSUMPTION MINIMIZE ELECTRICITY BILL



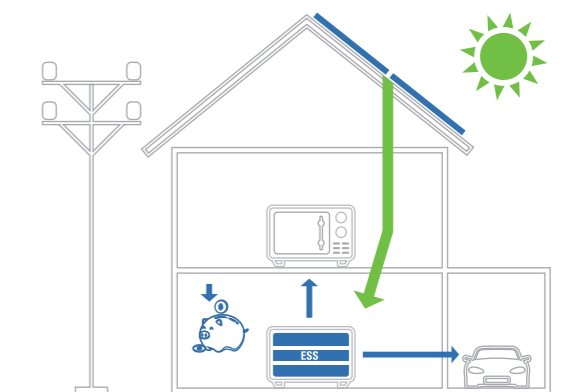
## ENERGY INDEPENDENT AND COST-SAVING

The Solar Home Kit provides a high quality and cost-effective solution for home owners. It has good adaptability, suitable for several kinds of roofs. Combined with energy storage and home energy management system (HEMS), G-Home allows you to store the solar energy for night time when needed. With energy bills ever increasing, self-consumption of this solar energy is the smart way to save money and reduce your carbon footprint.

### ENERGY CONSUMPTION PATTERN



### ENERGY INDEPENDENT MODE



## OPTIMIZED SIZE

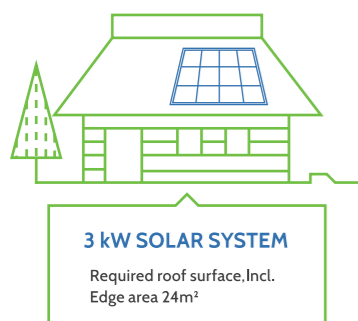
Based on an energy mode, we can choose the ideal energy storage size according to your house consumption and production data.

With your consumption profile, roof size and annual PV energy production, we can find out how the E-KwBe energy storage behaves and which size will be the most suitable for your requirements:

## EASY INSTALLATION

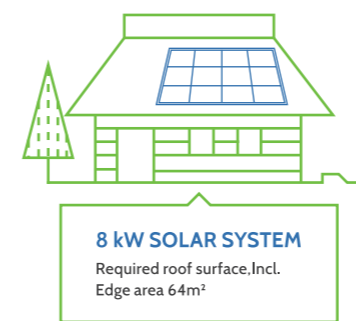
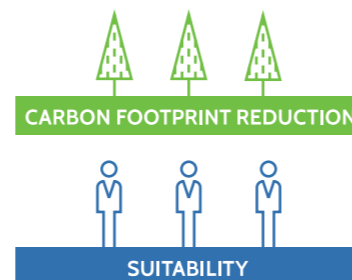
This All-In-One optimized package is well integrated and can be quickly installed. The only thing that you need to do is : Unpack and Plug-In.

Thanks to its compact design, the Residential Solar Kit, G-Home combines battery and inverter which can be easily mounted on the wall, as home appliances, in living room, garage, or in a commercial place. To perfectly meet your needs, G-Home Solar Kit has variant system capacity and mounting racks.



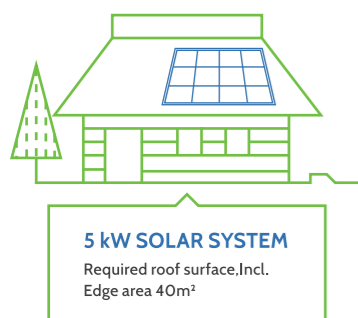
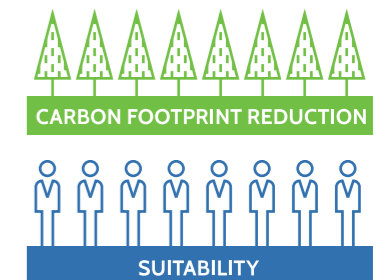
### 3kW SOLAR PACKAGE INCLUDES

- 12 pcs Solar panels
- 3 kW Inverter
- Mounting system
- All necessary accessories
- + 2.5 kWh Lithium battery
- Average daily energy 15.0 kWh per day (per unit)
- CO<sub>2</sub> Emission decrease 164.2 kg per year



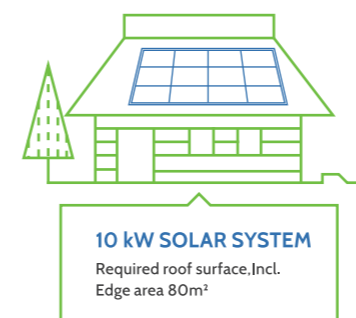
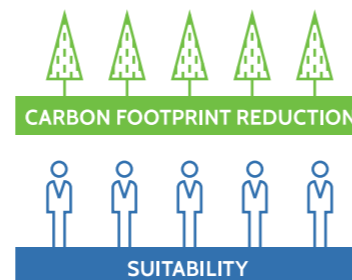
### 8kW SOLAR PACKAGE INCLUDES

- 32 pcs Solar panels
- 8 kW Inverter
- Mounting system
- All necessary accessories
- + 5.6 kWh Lithium battery
- Average daily energy 40.0 kWh per day (per unit)
- CO<sub>2</sub> Emission decrease 438 kg per year



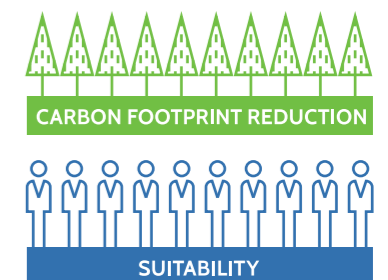
### 5kW SOLAR PACKAGE INCLUDES

- 20 pcs Solar panels
- 5 kW Inverter
- Mounting system
- All necessary accessories
- + 5.6 kWh Lithium battery
- Average daily energy 25.0 kWh per day (per unit)
- CO<sub>2</sub> Emission decrease 275.0 kg per year



### 10kW SOLAR PACKAGE INCLUDES

- 40 pcs Solar panels
- 10 kW Inverter
- Mounting system
- All necessary accessories
- + 2x5.6 kWh Lithium battery
- Average daily energy 50.0 kWh per day (per unit)
- CO<sub>2</sub> Emission decrease 547 kg per year



# COMPACT AND OPTIMIZED DESIGN



Comprehensive product warranty



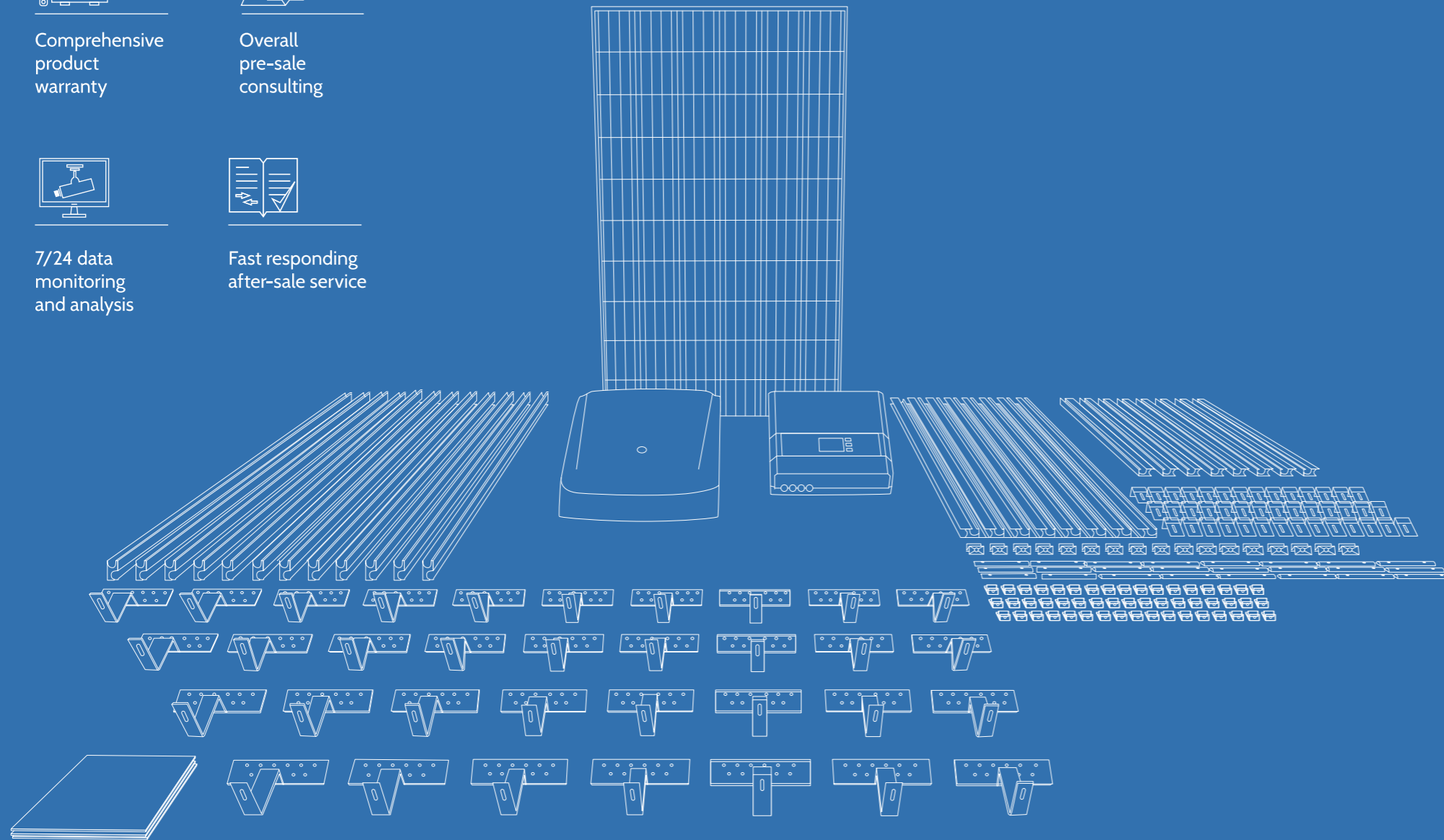
Overall pre-sale consulting



7/24 data monitoring and analysis



Fast responding after-sale service



## Service

- Comprehensive product warranty
- 7/24 data monitoring and analysis
- Overall pre-sale consulting
- Fast responding after-sale service

## Features











- All certified products
- Compact and all-in-one package
- Excellent flexibility with pre-assembled components
- One-stop transportation
- Easy and quick assembly
- Cost competitive

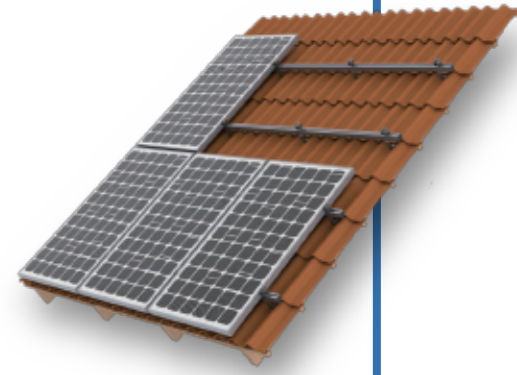


# G-HOME SOLAR KIT


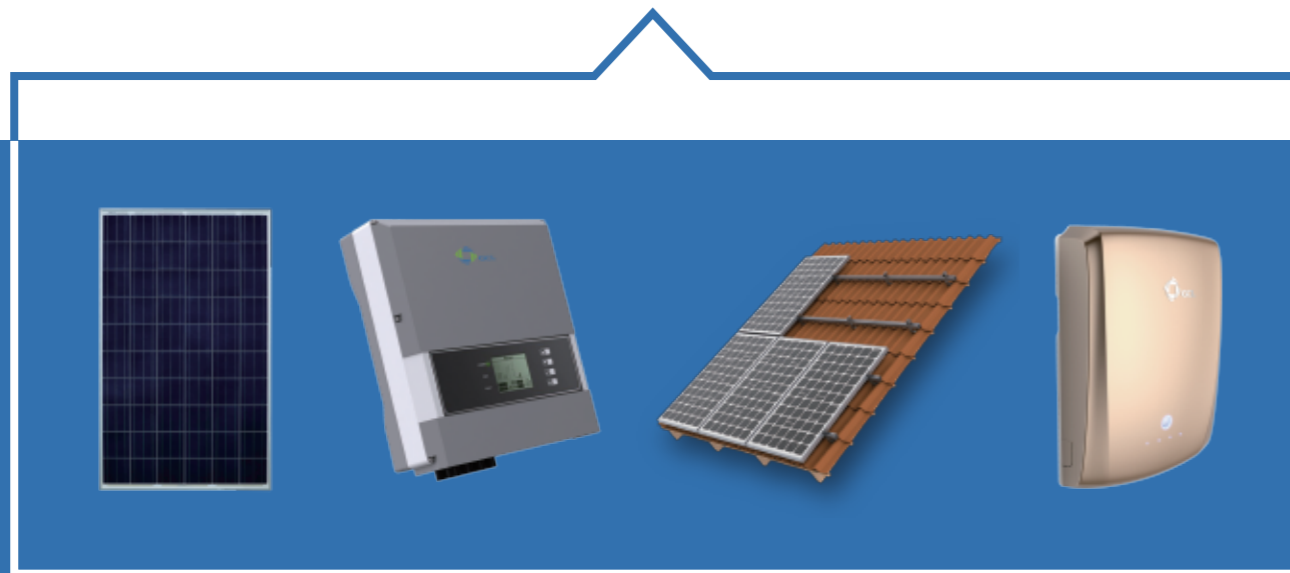
System Model		G-Home/3 K	G-Home/5 K	G-Home/8 K	G-Home/10 K
Power Output		3.0 kW	5.0 kW	8.0 kW	10.0 kW
Solar Panels	Panel Type	GCL P6/60 260+W	GCL P6/60 260+W	GCL P6/60 260+W	GCL P6/60 260+W
Inverter	Inverter Type	3.0 kW, single phase Hybrid inverter	5.0 kW, single phase Hybrid inverter	8.0 kW, three phase Hybrid inverter	10.0 kW, three phase Hybrid inverter
	Max Efficiency	97.6%	97.6%	98%	98%
	Continuous output voltage	230 V <sub>ac</sub>	230/400 V <sub>ac</sub>	400 V <sub>ac</sub>	400 V <sub>ac</sub>
	Output Frequency	50/60 Hz	50/60 Hz	50/60 Hz	50/60 Hz
	Noise Emission	< 45 dB	< 45 dB	< 45 dB	< 45 dB
	Protection Category	Indoor and Outdoor	Indoor and Outdoor	Indoor and Outdoor	Indoor and Outdoor
	Installation	Wall-mounted	Wall-mounted	Wall-mounted	Wall-mounted
	Connectivity CAN; USB2.0; RS485 (WiFi optional)	Connectivity CAN; USB2.0; RS485 (WiFi optional)	Connectivity CAN; USB2.0; RS485 (WiFi optional)	Connectivity CAN; USB2.0; RS485 (WiFi optional)	Connectivity CAN; USB2.0; RS485 (WiFi optional)
Lithium Battery (optional)	Battery Capacity	2.5 kWh	5.6 kWh	5.6 kWh	5.6 kWh × 2 pcs
Mounting system	According to roof type	1 set with accessories	1 set with accessories	1 set with accessories	1 set with accessories
PV cables	DC PV Cable	80 m	100 m	150 m	150 m
	AC Cable	10 m	10 m	10 m	10 m
Monitoring system	Software	Energy Management Platform with PC and APP Interface			

# G-HOME SOLAR KIT

COMPONENTS OF TILE-ROOF MOUNTING RACK		
Part Number	Part Name	Pic
1	Roofing part1-pothook	
2	Roofing part2-foundation support	
3	Tilt rail-2100	
4	Rail Connecting piece	
5	Rail connector	
6	Rail specialized nut	
7	Edge rail nut	
8	Middle rail nut	
9	Grounding log	
10	Roofing part2-foundation support	



Type	E-KwBe 2.5	E-KwBe.5 6
Total Energy	2.75 kWh	6.2 kWh
DOD(of Total Energy)	90%	90%
Nominal Capacity	2.5 kWh	5.6 kWh
Cell Technology	NCM	
Life Span	>10 years	
Warranty	7 years(Daily Cycle)	
DC Output (Current@25 °C)	25 A	50 A
Round Trip DC Efficiency	>97%	
DC Voltage	47 to 60.5 VDC	
Nominal Voltage	55.5 VDC	
Maximum Charging Voltage	63 V	
Operation Condition	Indoor or Outdoor	
Operating Temperature	From -20 °C to 45 °C	
Dimension (L*W*H)	669*452*127 mm	700*530*172 mm
Weight	25 kg	47.5 kg
Installation Method	Wall-mounted	
IP Rating	IP54	
Certification	UN38.3, ISO9001, EMC, TÜV	

## HOME ENERGY MANAGEMENT SYSTEM

- Connect from anywhere to your energy storage system with a PC, tablet or your smart phone.
- Smart energy self-consumption management to reduce electricity bill

## MAINTENANCE SERVICE

- Due to the integrated measurement cell you will always know how your system works.
- Thanks to the integrated data logger you can graphically evaluate your storage unit over the past day(s), week(s), month(s), year(s)
- Long-term warranty program

GCL System Integration